



Lodges & Caravans

FOR SALE



Ocean View, 24 Fishguard Bay Resort, Fishguard, Newport, Dorset

Price £499,000

- Modern Nordic-style lodge
- Open-plan living area
- Master with en-suite, wardrobe
- Deck with private hot tub
- Access to coastal path
- 3 bedrooms, 2 bathrooms
- Large windows, sea views
- Integrated kitchen appliances
- Built to BS 3632 standards
- Close to Fishguard village

24 Fishguard Bay Resort, Newport SA65 9ET

24 Ocean View Tingdene Harrington Centre Lounge at Fishguard Bay Resort

Owner: Bluebell Retreat Ltd

Make and Model: Tingdene Harrington Centre Lounge 2023

Size: 40 x 20

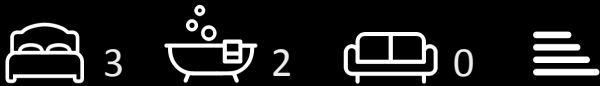
Bedrooms: 3

Bathrooms: 2

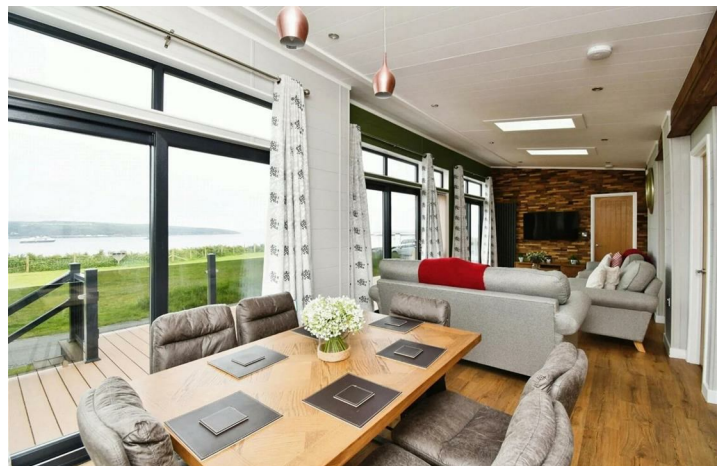
Tenure: 250 year licence

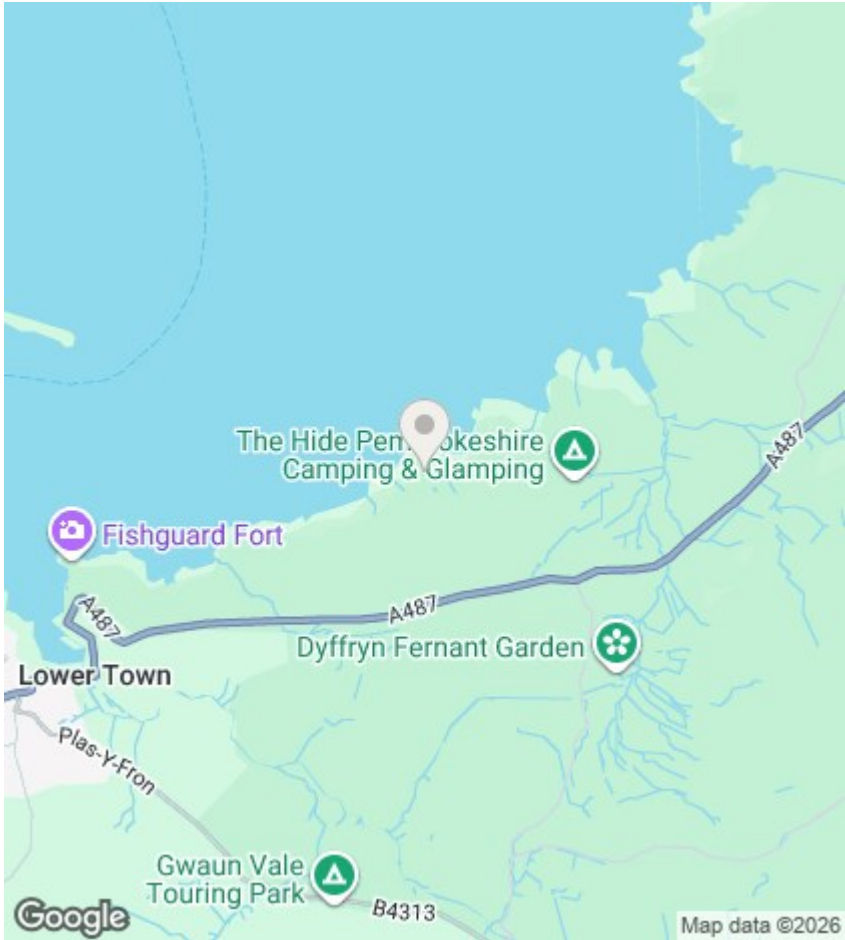
Season: 10.5 month holiday season. The park closes on 9 January and reopens on 1 March

Positioned within the scenic setting of Fishguard Bay Resort, this modern lodge offers spacious and comfortable coastal living with beautiful outlooks across the surrounding area. Built in 2023, the property extends to approximately 800 square feet and has been thoughtfully designed to suit both family use and relaxed holiday living.



Council Tax Band: Exempt





Directions

Viewings

Viewings by arrangement only. Call 07500 874938 to make an appointment.

EPC Rating: